



AB

CAUTION

Read this before operating your unit.

To assure the finest performance, please read this manual carefully. Keep it in a safe place for future reference.

- 1 Install this unit in a well ventilated, cool, dry, clean place - away from direct sunlight, heat sources, vibration, dust, moisture, and/or cold. (Do not use/keep this unit in a car etc.)
- 2 Locate this unit away from other electrical appliances, motors, or transformers to avoid humming sounds.
- 3 Do not expose this unit to sudden temperature changes from cold to hot, and do not locate this unit in an environment with high humidity (i.e. a room with a humidifier) to prevent condensation inside this unit, which may cause an electrical shock, fire, damage to this unit, and/or personal injury.
- 4 Avoid installing this unit where foreign objects may fall onto this unit and/or this unit may be exposed to liquid dripping or splashing. On the top of this unit, do NOT place:
 - Other components, as they may cause damage and/or discoloration on the surface of this unit.
 - Burning objects (i.e. candles), as they may cause fire, damage to this unit, and/or personal injury.
 - Containers with liquid in them, as they may fall and liquid may cause electrical shock to the user and/or damage to this unit.
- 5 Do not cover this unit with a newspaper, tablecloth, curtain, etc. in order not to obstruct heat radiation. If the temperature inside this unit rises, it may cause fire, damage to this unit, and/or personal injury.
- 6 Do not operate this unit upside-down. They may overheat, possibly causing damage.
- 7 Do not use force on switches, knobs, and/or cords.
- 8 When disconnecting the power cable/AC adaptor from the wall outlet, grasp the AC plug; do not pull the cord.
- 9 Do not clean this unit with chemical solvents; this might damage the finish. Use a clean, dry cloth.
- 10 Only the voltage specified on this unit must be used. Using this unit with a higher voltage than specified is dangerous and may cause fire, damage to this unit, and/or personal injury. Yamaha will not be held responsible for any damage resulting from use of this unit with a voltage other than that specified.
- 11 Do not attempt to modify or fix this unit. Contact qualified Yamaha service personnel when any service is needed. The cabinet should never be opened for any reason.
- 12 When not planning to use this unit for long periods of time (i.e. when going on vacation), disconnect all AC plugs from the wall outlet.
- 13 Be sure to read the “TROUBLESHOOTING” section regarding common operating errors before concluding that the unit is faulty.
- 14 Before moving this unit, disconnect all AC plugs from the wall outlets.
- 15 Be sure to use the AC adaptors supplied with this unit. Using an AC adaptor other than those provided may cause fire or damage to this unit.
- 16 Install this unit near the wall outlet and where the AC plugs can be reached easily.

17 For added protection for this product during a lightning storm, or when it is left unattended and unused for long periods of time, unplug it from the wall outlet. This will prevent damage to the product due to lightning and power-line surges.


There is a chance that placing this unit too close to a CRT-based (Braun tube) TV set might impair picture color. Should this happen, move this unit away from the TV set.

Do not use this unit within 22 cm (9 inches) of persons with a heart pacemaker implant or defibrillator implant.

WARNING
TO REDUCE THE RISK OF FIRE OR ELECTRIC SHOCK, DO NOT EXPOSE THIS UNIT TO RAIN OR MOISTURE.

Even if an iPhone or iPod is not connected to this unit, this unit is not disconnected from the AC power source as long as it is connected to the wall outlet. In this state, this unit is designed to consume a very small quantity of power.

Information for Users on Collection and Disposal of Old Equipment



This symbol on the products, packaging, and/or accompanying documents means that used electrical and electronic products should not be mixed with general household waste.

For proper treatment, recovery and recycling of old products, please take them to applicable collection points, in accordance with your national legislation and the Directives 2002/96/EC.

By disposing of these products correctly, you will help to save valuable resources and prevent any potential negative effects on human health and the environment which could otherwise arise from inappropriate waste handling.

For more information about collection and recycling of old products, please contact your local municipality, your waste disposal service or the point of sale where you purchased the items.

[Information on Disposal in other Countries outside the European Union]
This symbol is only valid in the European Union. If you wish to discard these items, please contact your local authorities or dealer and ask for the correct method of disposal.

For U.K. customers

If the socket outlets in the home are not suitable for the plug supplied with this appliance, it should be cut off and an appropriate 3 pin plug fitted. For details, refer to the instructions described below.

Note
The plug severed from the mains lead must be destroyed, as a plug with bared flexible cord is hazardous if engaged in a live socket outlet.

SPECIAL INSTRUCTIONS FOR U.K. MODEL

IMPORTANT
THE WIRES IN MAINS LEAD ARE COLOURED IN ACCORDANCE WITH THE FOLLOWING CODE:
Blue: NEUTRAL
Brown: LIVE

As the colours of the wires in the mains lead of this apparatus may not correspond with the coloured markings identifying the terminals in your plug, proceed as follows:
The wire which is coloured BLUE must be connected to the terminal which is marked with the letter N or coloured BLACK. The wire which is coloured BROWN must be connected to the terminal which is marked with the letter L or coloured RED.
Making sure that neither core is connected to the earth terminal of the three pin plug.

We, the manufacturer Yamaha hereby declare that the PDX-50 is in compliance with the essential requirements and other relevant provisions of Directive 1999/5/EC.

Vi, tillverkaren Yamaha, betygar härmed att PDX-50 är i överensstämmelse med de erforderliga krav och andra tillämpliga bestämmelser som anges i direktivet 1999/5/EC.

Noi, il fabbricante Yamaha, con questo dichiariamo che PDX-50 si trova in osservanza dei requisiti essenziali e delle altre normative pertinenti della direttiva 1999/5/EC.

Nosotros, el fabricante Yamaha, declaramos por el presente testamento que el PDX-50 cumple con los requisitos esenciales y otras provisiones pertinentes de la Directiva 1999/5/EC.

Yamaha verklaart hierbij dat de PDX-50 voldoet aan de essentiële vereisten en andere relevante voorzieningen van Richtlijn 1999/5/EC.



INTRODUCTION

PDX-50 is a portable player dock designed for iPhone or iPod series. The unit can be operated wirelessly using the iPhone or iPod connected to the transmitter. Also the charging cradle can be used for charging the iPhone or iPod, or to play music or movies for an extended time.

Alphabetical letters below (a, b, etc.) can be used for reference to the illustrations on the separate sheet “Quick Manual” for details.

■ Supplied accessories

- AC adaptor (for the speaker: DC 15V, 2.66A) [a]..... 1
(model number: NU40-2150266-I3)
- Power cable [b]..... 1
- Transmitter (PDX-50TX) [c]..... 1
- Charging cradle (PDX-50BC) [d]..... 1
- AC adaptor (for the charging cradle: DC 5V, 1A) [e] 1
The shape of the adaptor may vary depending on the area you purchased.
(Japanese/North American model: MU12-2050100-A1)
(Chinese model: MU12-2050100-A2)
(Australian model: MU12-2050100-A3)
(U.K. model: MU12-2050100-B2)
(Korean model: MU12-2050100-C4)
(European/Southeast Asian model: MU12-2050100-C5)
- Owner’s Manual (this manual)..... 1
- Quick Manual..... 1

■ Copyright and logo marks

iPod™, iPhone™
iPod is a trademark of Apple Inc., registered in the U.S. and other countries.
iPhone is a trademark of Apple Inc.



“Made for iPod” means that an electronic accessory has been designed to connect specifically to iPod and has been certified by the developer to meet Apple performance standards.
“Works with iPhone” means that an electronic accessory has been designed to connect specifically to iPhone and has been certified by the developer to meet Apple performance standards.
Apple is not responsible for the operation of this device or its compliance with safety and regulatory standards.

CONTROLS AND FUNCTIONS

🔊 / 🔊 (Volume keys) [1]

Adjusts the volume level.

Status indicator (LED) [9]

Indicates the current status of the unit.

| LED status (speaker/transmitter) | The current status of this unit |
|--|---|
| Off | The unit is in standby mode. An iPhone or iPod is not connected. |
| Flashes green | Connection in progress, please wait. |
| Flashes green once | Adjusting the volume level. |
| Lights up green | The unit turns on. An iPhone or iPod is connected. |
| Lights up green and flashes red | Flashes red for 2 seconds: An unsupported iPod is connected. Keeps flashing red: Connection failed. (Connect again.) |
| Flashes red | The protection circuitry has been activated. (Disconnect the AC adaptor and wait for a while.) |
| Flashes red once | The volume of this unit is set to maximum or minimum. |
| Flashes red (regardless of green status) | The battery of the iPhone or iPod is low. |

DC IN 15V jack [h]

Connect the AC adaptor (for the speaker) to this jack to supply power to the speaker. When the AC adaptor is connected, the speaker will be in standby mode, consuming a small quantity of electricity. When an iPhone or iPod is connected to the transmitter (PDX-50TX), the speaker turns on from standby mode. When the iPhone or iPod is disconnected from the transmitter, the speaker returns to standby mode.

Transmitter (PDX-50TX) [c]

Connects an iPhone or iPod series. When the iPhone or iPod is disconnected, the unit will be in standby mode. The iPhone or iPod can be connected (or disconnected) anytime.

Charging cradle (PDX-50BC) [d]

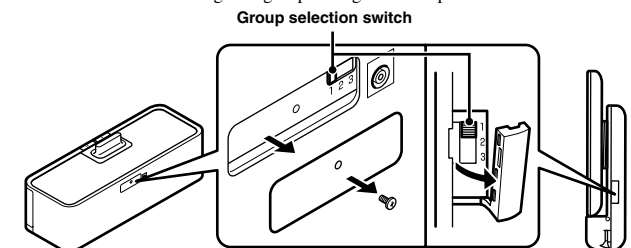
Charges the battery of the iPhone or iPod.

DC IN 5V jack [i]

Connect the AC adaptor (for the charging cradle) to this jack to supply power to the charging cradle.

Group selection switch

Use these switches to change the group setting for both speaker and transmitter.



TROUBLESHOOTING

Refer to the table below if the unit does not function properly. If the problem you are experiencing is not listed below, or if the instruction below does not help, turn off this unit, disconnect the power cable, and contact the nearest authorized Yamaha dealer or service center.

| Problem | Cause | Remedy |
|--|---|--|
| No sound | The speaker is connected to another unit. | Select a different group by changing the group selection switch of the speaker and transmitter. |
| | The speaker and transmitter are not connected since they are set to different groups. | Set both the speaker and transmitter to the same group. |
| | Distance is too far. | Move the transmitter closer to the speaker. |
| | There is a device (microwave oven, wireless LAN, etc.) outputting signals in the 2.4 GHz frequency band nearby. | Move this unit. |
| | The iPhone or iPod is not connected to the transmitter firmly. | Connect the iPhone or iPod firmly. |
| | The iPhone or iPod software version has not been updated. | Download the latest iTunes software to update the iPhone or iPod firmware version to the latest. |
| | The signal from the transmitter is blocked by your body or metallic objects, etc. | Change the way of holding, the orientation, or the position of the transmitter to avoid your body or metallic objects blocking the signal. |
| | The power of the speaker is off. | Connect the AC adaptor correctly. |
| | The battery of the iPhone or iPod is low. | Charge the iPhone or iPod. |
| | The volume is turned down. | Turn up the volume. |
| | The iPhone or iPod is in the process of connecting with the speaker. | Please wait for a while. |
| The protection circuitry has been activated by excessive volume. | Turn down the volume. | |
| Cannot change the volume by changing the volume of the iPhone or iPod. | The iPhone or iPod being used is not supported by this unit, or the iPhone or iPod is not connected firmly. | Use the supported iPhone or iPod. Connect the iPhone or iPod firmly. |
| The power of the speaker does not turn off after the iPhone or iPod is disconnected from the transmitter. | The speaker is connected to another unit. | Change the group setting. |
| Suddenly the speaker produces sound even though an iPhone or iPod is not connected. | | |

SPECIFICATIONS

| | |
|--|--|
| Supported iPod..... | iPod (5th generation), iPod classic, iPod nano, iPod touch |
| Supported iPhone..... | iPhone, iPhone 3G |
| Maximum RMS output power per channel (6 Ω 1 kHz, 10% THD)..... | 15 W + 15 W |
| Power Supply | |
| U.S.A. and Canada models..... | AC 120 V, 60 Hz |
| Other models | AC 100 to 240 V, 50/60 Hz |
| Power Consumption | |
| PDX-50..... | 10 W |
| PDX-50TX/PDX-50BC..... | 4 W |
| Power Consumption without connecting iPod/iPhone | |
| PDX-50..... | less than 1 W |
| PDX-50TX/PDX-50BC..... | less than 1 W |
| Transmission range | Approx. 20 m (66 ft) (without interference) |
| Maximum playback duration | Approx. 10 hours (from full charged iPod) |
| Number of speakers which can be simultaneously transmitted to..... | Up to 7 speakers (depending on the circumstances) |
| Dimensions (W x D x H) | 350 x 125 x 127.5 mm (13-12/16" x 4-15/16" x 5") |
| Weight (without accessories) | 1.7 kg (3.7 lbs) |

iPod (4th generation or before), iPod without Dock connector, iPod photo or iPod mini are not supported by this unit.

*Specifications are subject to change without notice.

Limited Guarantee for European Economic Area (EEA) and Switzerland

Thank you for having chosen a Yamaha product. In the unlikely event that your Yamaha product needs guarantee service, please contact the dealer from whom it was purchased. If you experience any difficulty, please contact Yamaha representative office in your country. You can find full details on our website (<http://www.yamaha-hifi.com/> or <http://www.yamaha-uk.com/> for U.K. resident).

The product is guaranteed to be free from defects in workmanship or materials for a period of two years from the date of the original purchase. Yamaha undertakes, subject to the conditions listed below, to have the faulty product or any part(s) repaired, or replaced at Yamaha's discretion, without any charge for parts or labour. Yamaha reserves the right to replace a product with that of a similar kind and/or value and condition, where a model has been discontinued or is considered uneconomic to repair.

Conditions

- The original invoice or sales receipt (showing date of purchase, product code and dealer's name) MUST accompany the defective product, along with a statement detailing the fault. In the absence of this clear proof of purchase, Yamaha reserves the right to refuse to provide free of charge service and the product may be returned at the customer's expense.
- The product MUST have been purchased from an AUTHORISED Yamaha dealer within the European Economic Area (EEA) or Switzerland.
- The product must not have been the subject of any modifications or alterations, unless authorised in writing by Yamaha.
- The following are excluded from this guarantee:
 - Periodic maintenance and repair or replacement of parts due to normal wear and tear.
 - Damage resulting from:
 - Repairs performed by the customer himself or by an unauthorised third party.
 - Inadequate packaging or mishandling, when the product is in transit from the customer. Please note that it is the customer's responsibility to ensure the product is adequately packaged when returning the product for repair.
 - Misuse, including but not limited to (a) failure to use the product for its normal purpose or in accordance with Yamaha's instructions on the proper use, maintenance and storage, and (b) installation or use of the product in a manner inconsistent with the technical or safety standards in force in the country where it is used.
 - Accidents, lightning, water, fire, improper ventilation, battery leakage or any cause beyond Yamaha's control.
 - Defects of the system into which this product is incorporated and/or incompatibility with third party products.
 - Use of a product imported into the EEA and/or Switzerland, not by Yamaha, where that product does not conform to the technical or safety standards of the country of use and/or to the standard specification of a product sold by Yamaha in the EEA and/or Switzerland.
 - Non AV (Audio Visual) related products.
(Products subject to "Yamaha AV Guarantee Statement" are defined in our website at <http://www.yamaha-hifi.com/> or <http://www.yamaha-uk.com/> for U.K. resident.)
- Where the guarantee differs between the country of purchase and the country of use of the product, the guarantee of the country of use shall apply.
- Yamaha may not be held responsible for any losses or damages, whether direct, consequential or otherwise, save for the repair or replacement of the product.
- Please backup any custom settings or data, as Yamaha may not be held responsible for any alteration or loss to such settings or data.
- This guarantee does not affect the consumer's statutory rights under applicable national laws in force or the consumer's rights against the dealer arising from their sales/purchase contract.

