

PM5D V1.20 Supplementary Manual

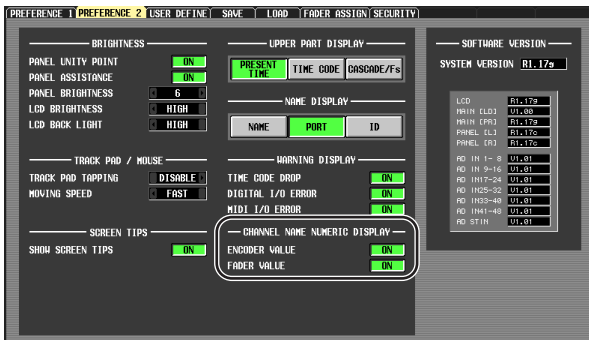
PM5D system software V1.20 includes the following changes and additions relative to V1.04 (changes up to V1.12 are also included).

Use ENCODER [ON] keys to turn phantom power (+48V) on/off (from V1.05)

A “USE ENCODER-ON AS +48V” option has been added to the PREFERENCE 1 screen. If this option is on, and HA (head amp input sensitivity) is selected as the encoder mode, you can use the ENCODER [ON] key located above each encoder to turn phantom power supply (+48V) on/off.

Switch parameter value indication on/off in the Name display (from V1.05)

A “CHANNEL NAME NUMERIC DISPLAY” field has been added to the PREFERENCE 2 screen. In V1.04 and earlier, operating the fader or encoder (pan setting) of each channel caused the name display to show the value of that parameter. In V1.05 and later, turning the “ENCODER VALUE” and “FADER VALUE” options off will prevent the respective parameter value from appearing when you operate the fader or encoder.

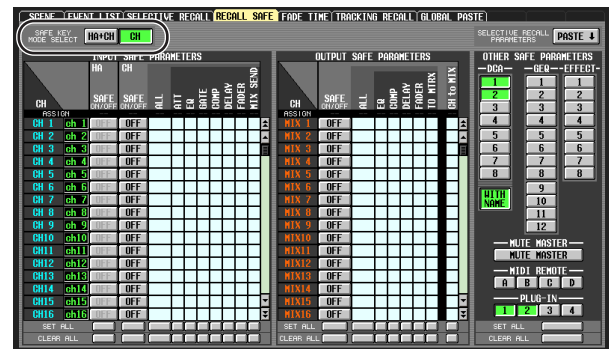


Select the monitor source from the panel (from V1.05)

When selecting a monitor source from the panel in V1.04 or earlier, you could simultaneously select one source from [2TR A1]–[2TR D3] or [DEFINE] and one source from [STEREO A]/[STEREO B] (including LCR), for a maximum total of two sources. In V1.05 and later, turning on one key will turn off the other keys, allowing you to select a single monitor source more rapidly. If you want to select two sources simultaneously (as in V1.04 and earlier), press the corresponding panel keys simultaneously, or use the MONITOR screen.

HA follows Recall Safe on/off operations (from V1.05)

A new SAFE KEY MODE SELECT section has been added to the RECALL SAFE screen. If you turn on the HA+CH button, using the [RECALL SAFE] key of the panel or the RECALL SAFE button in the CH VIEW screen (INPUT VIEW function) to turn Recall Safe on/off will now also turn on/off the Recall Safe setting for the HA patched to the corresponding channel. If the CH button is on, the HA Recall Safe setting will not be linked.



DCA group name Recall Safe and Selective Recall can be switched on/off (from V1.05)

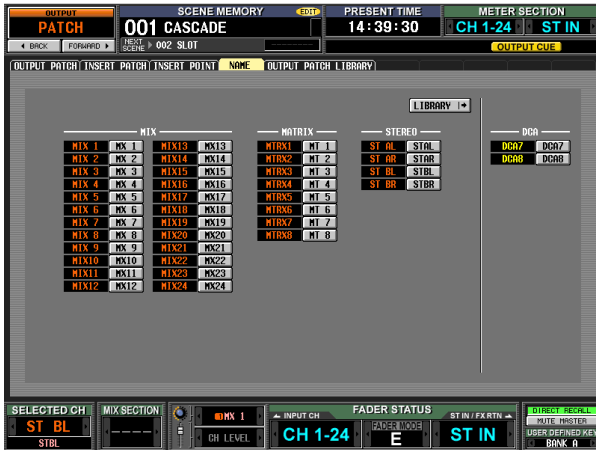
A new WITH NAME button has been added to the DCA area of the RECALL SAFE screen and SELECTIVE RECALL screen. This allows you to exclude just the DCA group name from DCA group Recall Safe and Selective Recall. If the WITH NAME button is on, Recall Safe and Selective Recall will apply to the DCA group names of DCA groups for which these functions are on. If the WITH NAME button is off, DCA group names are excluded from Recall Safe and Selective Recall.

Displaying output channel names (from V1.20)

The OUTPUT PATCH function now includes a NAME screen that enables you to name output channels and view channel names on various screens.

The procedure functions the same as the NAME screen for the INPUT PATCH function.

However, the NAME screen is not included in the CH COPY, GLOBAL PASTE, or CSV IMPORT/EXPORT function.



Parameter operation for Recall Safe/ Selective Recall (from V1.12)

When using Recall Safe or Selective Recall, there has been a change in the behavior of parameters of which only one exists for each pair of adjacent odd-numbered/even-numbered channels or modules (see owner's manual p.165). If Recall Safe or Selective Recall is specified for only one of these channels or modules, the parameters will behave as follows.

- **PAIR**
Forcibly turned off (pairing will be defeated).
- **GATE STEREO LINK**
- **COMP STEREO LINK**
- **GEQ LINK**
LINK parameters will be forcibly turned off (link will be defeated).
- **DELAY GANG**
- **ATT GANG**
GANG parameters will be recalled. If GANG turns On because of the recall, the relative differences of the DELAY and ATT parameter values following the recall will be maintained when they are edited.
- **MS DECODE**
- **FIXED/VARI**
These will not be recalled.
- **PAN MODE**
The PAN MODE parameter will be recalled. However, if the recall would cause the PAN MODE setting to change from BALANCE to some other setting, or from some other setting to BALANCE, then the PAN MODE and PAN parameters will not be recalled. Also, if the recall

causes the PAN MODE to become GANG PAN, the relative difference of the PAN parameter values following the recall will be maintained when they are edited.

Support for the Y96K card (from V1.10)

A PLUG-IN screen has been added to the EFFECT function. Also, PLUG-IN parameters have been added to the RECALL SAFE screen and SELECTIVE RECALL screen of the SCENE function. These additions are in order to support the Y96K card that will become available in the near future from the Waves Corporation. For details on operation, refer to the owner's manual for the Y96K.


Please note that the Y96K card will operate as follows.

- Data will be stored/recalled as scene data, but the Undo function is not supported.
- If you power-off and then power-on the PM5D, conventional scene data will be in the same state as when you powered-off, but the Y96K will be in the state that was last stored or recalled.
- If you recall a scene that produces a major change in the settings of the Y96K, the settings of the Y96K will change several seconds after recall occurs on the PM5D. If you want the timing of the change to be synchronized, use the FADE TIME screen to specify a START OFFSET.
- Do not perform scene store/recall operations in the Y96K's update waiting screen. If you do so, the screen will become inoperable for up to 30 seconds.
- The Scene Store operation saves the Y96K settings in the PM5D. If you executed Scene Store while the Y96K had previously been installed, and then once again store the scene with the Y96K not installed, the previous Y96K settings will remain. If a scene has never been stored while the Y96K is installed, recalling that scene with the Y96K installed will not affect the Y96K in any way.
- In PREVIEW mode, the PLUG-IN screen does not display the Y96K status.

MIDI EVENT etc. data now maintained during scene recall (from V1.05)

The MIDI EVENT, GPI OUT CONTROL, and REMOTE TRANSPORT data included in a scene is now maintained when a scene recall occurs. This means that if you store a recalled scene into another scene, this data will be stored as it was when recalled.

DME series monitor source selection and EXTERNAL CUE on/off (from V1.05)

A MONITOR button and monitor source select button have been added to the DME CONTROL screen. When you click the monitor source select button (), the MONITOR POINT SELECT window will appear, letting you select the DME series unit monitor source. If the MONITOR button is on, the EXTERNAL CUE indicator in the upper part of the display will turn on, and the monitor signal of the DME series unit will be sent to the PM5D's CUE bus.



Note

Before turning on the MONITOR button, you must select the same port as the monitor output on the DME series unit and as the monitor input for the PM5D. To specify the DME series unit monitor output, use the "Monitor Out" dialog box of DME Designer, accessed by [Tools] menu → [Monitor]. To specify the PM5D monitor input, use the MONITOR PORT field on the SETUP page of the DME CONTROL screen.

Much faster DME control (from V1.20)

The speed of remote control operation of the DME64N/24N (firmware version 2.0 or later) has been increased.

(In particular, speed is increased when a connection is made via an MY16-C or MY16-CII card.)

The speed of remote control operation of the DME8i-C/8o-C/4io-C has also been increased.

Newly added bulk dump data types (from V1.05)

The following data types can now be handled by bulk dump.

Data name (D0)	Data Number (D1,2)	tx/rx	Function
'K'	512 (Current Data)	tx/rx	Surround Setting & Request
'V'	512- (Current Data)	tx/rx	User Defined Keys & Request
'L'	512- (Current Data)	tx/rx	MIDI Remote & Request
'U'	512- (Current Data)	tx/rx	Fader Mode & Request

SETUP data compatibility (from V1.05)

SETUP data created on system software V1.05 or later cannot be loaded into a system that's running V1.03 or earlier. However, SETUP data created on system software V1.03 or earlier can be loaded by a system that's running V1.05 or later.

Scene data compatibility (from V1.10)

In conjunction with Y96K card support, compatibility of scene data (ALL DATA, SCENE MEMORY, SCENE MEMORY with LINKED LIBRARY) has been changed as follows.

Scene data created with system software V1.10 or later cannot be loaded into a system running V1.04 or earlier.

However, scene data created on a system running V1.04 or earlier can be loaded into a system running V1.10 or later.

In this case, the Y96K settings will remain as they were prior to loading. If you save this data on a system running V1.10 or later, the data size will increase by the amount required for Y96K support.

A note regarding scenes/libraries immediately after system startup

After the system is started up, the PM5D takes several minutes to transfer scene/library data within internal memory. (The time required depends on the amount of data.) This means that the following restrictions apply during this time.

- You can't execute the PASTE button in the GLOBAL PASTE screen.
- You can't execute the scene memory UNDO function.
- Scene memory recall will take a bit of time.

List of parameters available for Pair or Recall Safe operation

The following table illustrates which parameters for the paired channels can be linked and which settings for each parameter can be selected for Recall Safe operation.

○ : Parameters of paired channels are linked.

— : Parameters cannot be linked, or selected for Recall Safe operation.

■ Input channels

Parameter	Pair	Recall Safe
Recall Safe	○	—
HA	GANG possible on HA	HA (not ALL)
NAME		—
PHASE	—	INPUT ALL
MS DECODE	—	INPUT ALL
LCR	○	INPUT ALL
Fade Time	○	INPUT FADER, ALL
Insert	○	INPUT ALL
Direct Out	○	INPUT ALL
On	○	INPUT ALL
Fader	○	INPUT FADER, ALL
PAN	GANG	INPUT ALL
Att	GANG	INPUT ATT, ALL
Gate	○	INPUT GATE, ALL
Comp	○	INPUT COMP, ALL
HPF	○	INPUT EQ, ALL
EQ	○	INPUT EQ, ALL
Delay On	○	INPUT DELAY, ALL
Delay TIME	GANG	INPUT DELAY, ALL
Surround LFE	○	INPUT ALL
Surround Div	○	INPUT ALL
Surround Div Rear	○	INPUT ALL
Surround Div Link	○	INPUT ALL
Mute Assign	○	INPUT ALL
DCA Assign	○	INPUT ALL
To Stereo On	○	INPUT ALL
To Mix Follow Pan	○	INPUT MIX SEND, ALL
To Mix ON	○	INPUT MIX SEND, ALL
To Mix LEVEL	○	INPUT MIX SEND, ALL
To Mix PAN	○	INPUT MIX SEND, ALL
To Mix PRE/POST	○	INPUT MIX SEND, ALL
PAIR	○	INPUT ALL
Global Paste	○	—
Solo Safe	○	—
Cue	○	—
Key In Cue	○	—
Mute Safe	○	—
Selective Recall	○	—
Tracking Recall	○	—

■ MIX channels

Parameter	Pair	Recall Safe
Recall Safe	○	—
LCR	○	MIX ALL
Fade Time	○	MIX FADER, ALL
Insert	○	MIX ALL
On	○	MIX ALL
Fader	○	MIX FADER, ALL
BALANCE	—	MIX ALL
Comp	○	MIX COMP, ALL
EQ	○	MIX EQ, ALL

Delay On	○	MIX DELAY, ALL
Delay TIME	GANG	MIX DELAY, ALL
Mute Assign	○	MIX ALL
DCA Assign	○	MIX ALL
To Mix ON	○	CH to MIX (not ALL)
To Mix LEVEL	○	CH to MIX (not ALL)
To Mix Pan	—	CH to MIX (not ALL)
To Mix PRE/POST	○	CH to MIX (not ALL)
To Matrix ON	○	MIX TO MTRX, ALL
To Matrix LEVEL	○	MIX TO MTRX, ALL
To Matrix POINT	○	MIX TO MTRX, ALL
To Matrix PAN	—	MIX ALL
To Stereo On	○	MIX ALL
To Stereo Point	○	MIX ALL
Post To ST	○	MIX ALL
Mute Assign	○	MIX ALL
DCA Assign	○	MIX ALL
PAIR	○	MIX ALL
VARI/FIX	○	MIX ALL
Global Paste	○	—
Solo Safe	○	—
Cue	○	—
Mute Safe	○	—
Selective Recall	○	—
Tracking Recall	○	—

■ MATRIX channels

Parameter	Pair	Recall Safe
Recall Safe	○	—
Fade Time	○	MATRIX FADER, ALL
Insert	○	MATRIX ALL
On	○	MATRIX ALL
Fader	○	MATRIX FADER, ALL
BALANCE	—	MATRIX ALL
Comp	○	MATRIX COMP, ALL
EQ	○	MATRIX EQ, ALL
Delay On	○	MATRIX DELAY, ALL
Delay TIME	GANG	MATRIX DELAY, ALL
Mute Assign	○	MATRIX ALL
DCA Assign	○	MATRIX ALL
PAIR	○	MATRIX ALL
Global Paste	○	—
Solo Safe	○	—
Cue	○	—
Mute Safe	○	—
Selective Recall	○	—
Tracking Recall	○	—

■ STEREO channels

Parameter	Pair	Recall Safe
Recall Safe	○	—
Fade Time	○	ST FADER, ALL
Insert	○	ST ALL
On	○	ST ALL
Fader	○	SY FADER, ALL
BALANCE	—	ST ALL
Comp	○	ST COMP, ALL
EQ	○	ST EQ ALL
Delay On	○	ST DELAY, ALL
Delay TIME	GANG	ST DELAY, ALL
Mute Assign	○	ST ALL
DCA Assign	○	ST ALL
MONO	—	ST ALL
To Matrix On	○	ST TO MTRX, ALL
To Matrix LEVEL	○	ST TO MTRX, ALL
To Matrix POINT	○	ST TO MTRX, ALL
To Matrix PAN	—	ST ALL
Global Paste	○	—
Solo Safe	○	—
Cue	○	—
Mute Safe	○	—
Selective Recall	○	—
Tracking Recall	○	—

■ Other

Parameter	Pair	Recall Safe
INPUT PATCH		Turn off the library link.*
OUTPUT PATCH		Turn off the library link.*
EFF1-8		EFF1-8
GEQ1-12	LINK	GEQ1-12
DCA FADER,MUTE		DCA1-8
DCA FADE TIME		DCA1-8
DCA NAME		DCA1-8 (WITH NAME)
MUTE MASTER		MUTE MASTER
MIDI REMOTE		MIDI REMOTE A-D
PLUG-IN		PLUG-IN 1-4

* The parameter becomes eligible for Recall Safe if the library link is turned off in the SCENE screen.