

Clavinova® CLP-525 Quick Operation Guide

While holding down the [DEMO/SONG] or [PIANO/VOICE] button, press one of the highlighted keys shown below to select a Demo Song or set a parameter. (Refer to Diagrams 1 and 2 below.)

1

DEMO/SONG +

Quick Play				Demo Songs				50 Preset Songs (50 Greats for the Piano)												Song Data Loaded from the Computer																																																			
A#-1	C#0	D#0	F#0	G#0	A#0	C#1	D#1	F#1	G#1	A#1	C#2	D#2	F#2	G#2	A#2	C#3	D#3	F#3	G#3	A#3	C#4	D#4	F#4	G#4	A#4	C#5	D#5	F#5	G#5	A#5	C#6	D#6	F#6	G#6	A#6																																				
Off						Grand Piano 1	Grand Piano 2	E.PIANO 1	Harpischord	Pipe Organ	Strings	Song No. 1	Song No. 2	Song No. 3	Song No. 4	Song No. 5	Song No. 6	Song No. 7	Song No. 8	Song No. 9	Song No. 10	Song No. 11	Song No. 12	Song No. 13	Song No. 14	Song No. 15	Song No. 16	Song No. 17	Song No. 18	Song No. 19	Song No. 20	Song No. 21	Song No. 22	Song No. 23	Song No. 24	Song No. 25	Song No. 26	Song No. 27	Song No. 28	Song No. 29	Song No. 30	Song No. 31	Song No. 32	Song No. 33	Song No. 34	Song No. 35	Song No. 36	Song No. 37	Song No. 38	Song No. 39	Song No. 40	Song No. 41	Song No. 42	Song No. 43	Song No. 44	Song No. 45	Song No. 46	Song No. 47	Song No. 48	Song No. 49	Song No. 50	1st Song	2nd Song	3rd Song	4th Song	5th Song	6th Song	7th Song	8th Song	9th Song	10th Song
A-1	B-1	C0	D0	E0	F0	G0	A0	B0	C1	D1	E1	F1	G1	A1	B1	C2	D2	E2	F2	G2	A2	B2	C3	D3	E3	F3	G3	A3	B3	C4	D4	E4	F4	G4	A4	B4	C5	D5	E5	F5	G5	A5	B5	C6	D6	E6	F6	G6	A6	B6	C7																				

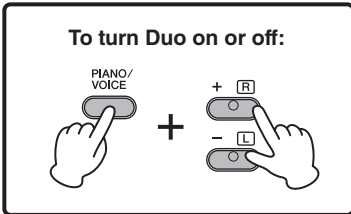
2

PIANO/VOICE +

IAC Depth				Voices				Reverb Types				Dampner Resonance				Reverb Depth				Octave Shift (Dual/Duo mode)				Volume Balance (Dual/Duo mode)				Touch Sensitivity																							
A#-1	C#0	D#0	F#0	G#0	A#0	C#1	D#1	F#1	G#1	A#1	C#2	D#2	F#2	G#2	A#2	C#3	D#3	F#3	G#3	A#3	C#4	D#4	F#4	G#4	A#4	C#5	D#5	F#5	G#5	A#5	C#6	D#6	F#6	G#6	A#6																
-3	-1	0	+2	Off		Grand Piano 1	Grand Piano 2	E.PIANO 1	Harpischord	Pipe Organ	Strings	Recital Hall	Chamber	Off	Off	On	0	2	4	5	7	9	11	12	14	16	17	19	Most suitable for the selected Voice	-1 (Voice 1)	+1 (Voice 1)	0 (Voice 2)	+1 (Voice 2)	-6	-4	-2	0	+2	+4	+5	Fixed	Medium	Hard								
A-1	B-1	C0	D0	E0	F0	G0	A0	B0	C1	D1	E1	F1	G1	A1	B1	C2	D2	E2	F2	G2	A2	B2	C3	D3	E3	F3	G3	A3	B3	C4	D4	E4	F4	G4	A4	B4	C5	D5	E5	F5	G5	A5	B5	C6	D6	E6	F6	G6	A6	B6	C7

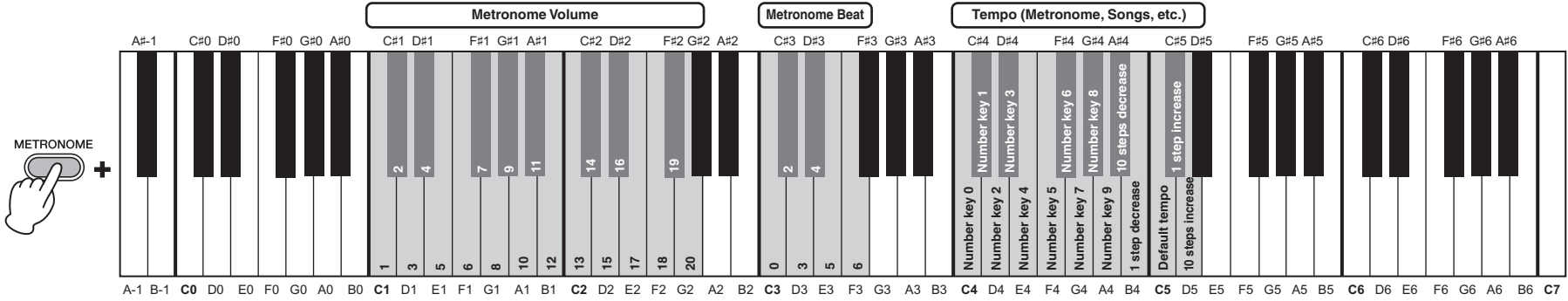
3

While holding down the [PIANO/VOICE] button, simultaneously press the [+R] and [-L] buttons to turn Duo on or off.

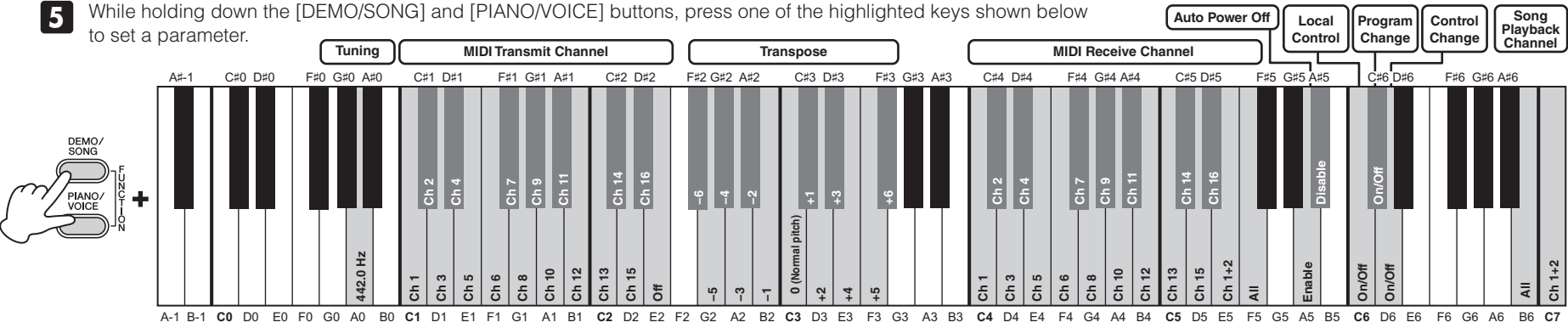


Clavinova® CLP-525 Quick Operation Guide

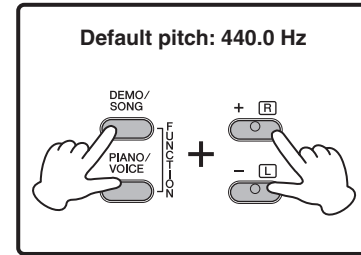
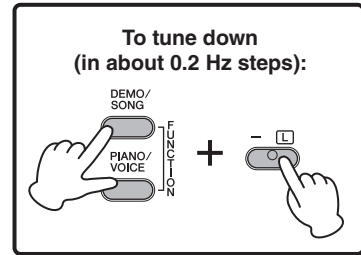
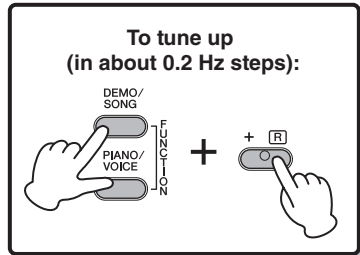
4 While holding down the [METRONOME] button, press one of the highlighted keys shown below to set a parameter.



5 While holding down the [DEMO/SONG] and [PIANO/VOICE] buttons, press one of the highlighted keys shown below to set a parameter.



6 While holding down the [DEMO/SONG] and [PIANO/VOICE] buttons, press the [+R], [-L] or both buttons as shown below to fine-tune the pitch of your instrument.



C.S.G., DMI Development Division
© 2013 Yamaha Corporation
310MWGR*. *01A0
Printed in Indonesia



ZH76740

ZH76740